

Essential-5 U/UTP Cable

Essential-5 U/UTP AWG24 Cat 5e PVC Eca Light Grey 305m box

Contact

LAN Systems (Nexans Cabling Solutions)
Phone: +44 (0)1256 486640
ncs.uk@nexans.com

Nexans ref.: [N100.561-LE](#)

- Unshielded construction
- Complies to latest Cat 5e standards
- Supports Gigabit Ethernet
- Guaranteed performance to 100MHz

DESCRIPTION

Application

Essential-5 cables are the standard 100MHz offering from Nexans. Manufactured and tested to the latest Category 5e specifications defined in the International and American cable standards, they are suitable for voice and data installations for applications up to 100 MHz.

Design

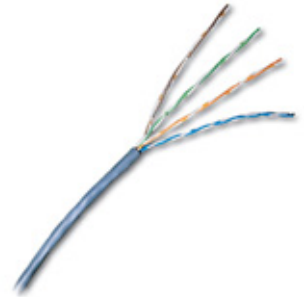
The Essential-5 cables have AWG 24 solid copper wires and comply with IEC 60228. The cables are available with a Light Grey PVC or an Orange LSZH sheath. Both versions have flame retardant properties compliant with IEC 60332-1.

Performance

Nexans Essential-5 cables are compliant with the requirements of the International, European and American cable standards, including ISO/IEC 11801, IEC 61156-5, EN 50173, EN 50288 and TIA/EIA 568-C.2.

Installation

To support the correct set-up of hand held analysers for installation testing, the actual cable NVP value is given in the cable's print legend.



essential

DECLARATION OF PERFORMANCE

Reaction to fire: E_{ca}
according to EN50575:2014
+A1:2016

STANDARDS

International ISO/IEC 11801

National ANSI/TIA-568-C.2



Reaction to fire
E_{ca}



Ambient installation T°C range
0 .. 50 °C



Operating temp.
-20 .. 60 °C



Flame retardant
IEC 60332-1



Electro magnetic interference resistance
No

All drawings, designs, specifications, plans and particulars of weights, size and dimensions contained in the technical or commercial documentation of Nexans is indicative only and shall not be binding on Nexans or be treated as constituting a representation on the part of Nexans.

Generated 10/07/18 www.nexans.co.uk Page 1 / 3

Essential-5 U/UTP Cable

Essential-5 U/UTP AWG24 Cat 5e PVC Eca Light Grey 305m box

Contact

LAN Systems (Nexans Cabling Solutions)
Phone: +44 (0)1256 486640
ncs.uk@nexans.com

CHARACTERISTICS

Construction characteristics

Type of cable	U/UTP
Outer sheath	PVC
Screen	Unshielded
Colour	Light grey

Dimensional characteristics

Conductor diameter	0.5 mm
Diameter over insulation	0.9 mm
Nominal outer diameter	4.9 mm
Approximate weight	30 kg/km

Electrical characteristics

Characteristic impedance	100 Ohm
--------------------------	---------

Transmission characteristics

Nominal Velocity of Propagation (NVP)	69 %
Propagation delay, max. 100 MHz	536 ns/100m

Mechanical characteristics

Maximum pulling force by laying	0.08 kN
---------------------------------	---------

Usage characteristics

Category	Cat. 5e
Range	essential
Component function	Cable
Ambient installation temperature, range	0 .. 50 °C
Operating temperature, range	-20 .. 60 °C
Fire load	400 MJ/km
Flame retardant	IEC 60332-1
Electro magnetic interference resistance	No
Length	305 m
Packaging	Box
Minimum Bend Radius - Installed	20 mm
Minimum Bend Radius - During Installation (under Tension)	40 mm

ELECTRICAL PERFORMANCE

all values are specified at 20°C

Frequency	Attenuation dB/100m	NEXT dB	ACR dB/100m	PS NEXT (*) dB	ELFEXT dB/100m	PSELFEXT dB/100m	RL dB
4	4.1	56.3	52.2	53.3	51.7	49.0	23.0
10	6.5	50.3	43.8	47.3	43.8	41.0	25.0
16	8.3	47.2	38.9	44.3	39.7	36.9	25.0
20	9.3	45.8	36.5	42.8	37.7	35.0	25.0
31.25	11.7	42.9	31.2	39.9	33.9	31.1	23.6
62.5	17.0	38.4	21.4	35.4	27.9	25.1	21.5

All drawings, designs, specifications, plans and particulars of weights, size and dimensions contained in the technical or commercial documentation of Nexans is indicative only and shall not be binding on Nexans or be treated as constituting a representation on the part of Nexans.

Generated 10/07/18 www.nexans.co.uk Page 2 / 3



Essential-5 U/UTP Cable

Essential-5 U/UTP AWG24 Cat 5e PVC Eca Light Grey 305m box

Contact

LAN Systems (Nexans Cabling Solutions)

Phone: +44 (0)1256 486640

ncs.uk@nexans.com

100	22.0	35.3	13.3	32.3	23.8	21.0	20.1
-----	------	------	------	------	------	------	------