



PIXELIDY S™

USER'S MANUAL



Hello, Thank you for using our devices and for placing your trust in us. We strive to provide you with high-quality, reliable and ergonomic equipment and do our utmost to meet your expectations.

However, should you notice any defects or malfunctions, we will be happy to help you resolve them.

For your own safety, please read this manual carefully before using your PixElidy projector for the first time.

For any questions or information: support@ereimul.com

SUMMARY

4	Safety instructions
4	First commissioning
6	Overview
6	Specifications
8	Mechanical drawings
9	Lyre-PixElidy assembly
11	Accessories
12	Warranty
13	Order codes

SAFETY INSTRUCTIONS



For your own safety and that of others, please read this manual carefully and follow its instructions to the letter.



This product is for professional use only. It is not intended for domestic use. This product presents significant risks of serious injury or death due to fire, electric shock and falls from height. Only experienced and qualified users are authorized to install and use these products.
Do not allow inexperienced persons to handle the products.

FIRST START-UP

Before using the product for the first time, make sure that it has not been damaged in transit. If this is the case, **DO NOT USE** the product and contact your EREIMUL dealer.

In all cases, always inspect the mechanical, electrical and connector parts of products before installation to check for damage.

If in doubt about any component, whether damaged or faulty, **DO NOT USE THE PARTS CONCERNED** and contact your dealer.

The manufacturer cannot be held responsible for damage caused by failure to comply with the safety, installation or assembly instructions contained in this manual, or by any modification of the products.

Failure to comply with safety, installation or assembly instructions, or modification of ELIDY products, will invalidate the warranty.

GENERAL CONDITION

Before starting up the PixElidyS :

- Check the general condition of the device
 - Check that the cable and connector are in good condition
 - Check that screws and nuts are properly tightened
-
- Please read the operating instructions carefully.
 - Connect this projector only to the products for which it is intended
 - DO NOT CONNECT DIRECTLY TO THE MAINS POWER SUPPLY.
 - It is imperative to disconnect the power supply to the fixture before carrying out any maintenance work. When hanging this luminaire overhead, use a suitable safety sling.
 - To avoid the risk of electric shock, do not open the unit. Installation and maintenance of this device must be carried out by a qualified technician.
 - This device must not be exposed to excessive temperatures (0-35°C).
 - Do not cover the fixture, and leave sufficient space for natural ventilation. Use only cables supplied by the manufacturer.
 - Eye hazard. ELIDY products use high-power LED (Light Emitting Diode) light sources. We strongly advise against looking directly at the light source.
- Prolonged exposure can cause damage to the eyes - The devices must not come into contact with flammable surfaces.
- In all cases, maintain a distance of at least 200 mm between the devices and nearby flammable surfaces.and nearby flammable surfaces.

This product complies with the CE standard

PRODUCT PRESENTATION

The PixElidy is an LED luminaire designed to be controlled by the PixElidy Drive driver. Its small size means it can be installed in a wide range of locations and go virtually unnoticed. Its high-quality LED guarantees the most faithful color rendering possible. The 10° aperture lens produces a tight beam to highlight a very precise area. Its lyre allows precise, locked adjustment.

Its magnet enables quick and easy attachment to a wide range of metal surfaces. The accessories supplied enable you to modify the beam's aperture and spread as required. Thanks to its plug and play connection system, installation is quick and easy.

SPECIFICATIONS

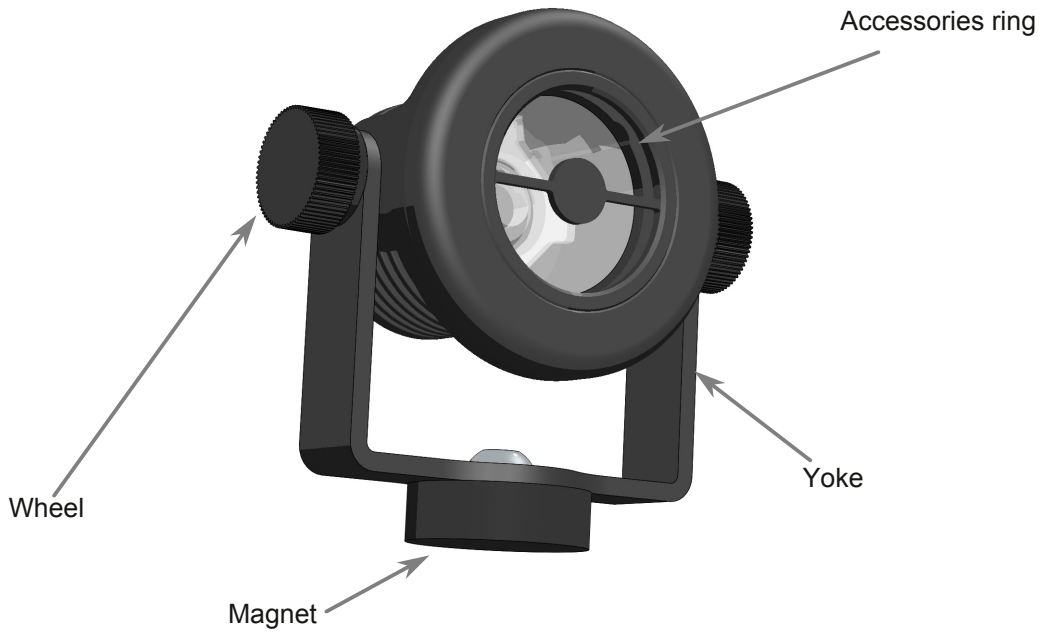
General	Dimensions	58mm(w) x 51mm(h) x 31mm(d)
	Weight (version touring)	58g (70g)
	Materials	Black anodized aluminum and ABS housing
	Cooling	Passive
	Connections	M6 male plug 2pins - Length: 500mm 2x0.3mm ² Nylon PA66 flame resistant material
	Operating temperature	0 - 35°C
	IP rating	IP65

Light	Type of LED	High power SMD 3535
	Number of LEDs	1
	Colour temperature	2700 - 3000 (autres températures on request)
	IRC	Min 90 / Typ 92
	Step Macadam	3
	Yield	102lm/W @ 3000K
	Optics	TIR lense / 10 ° / Ø21,6mm / PMMA clear

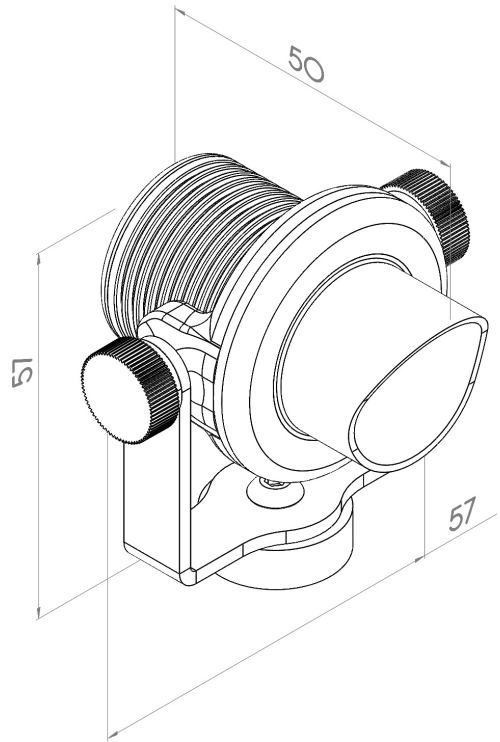
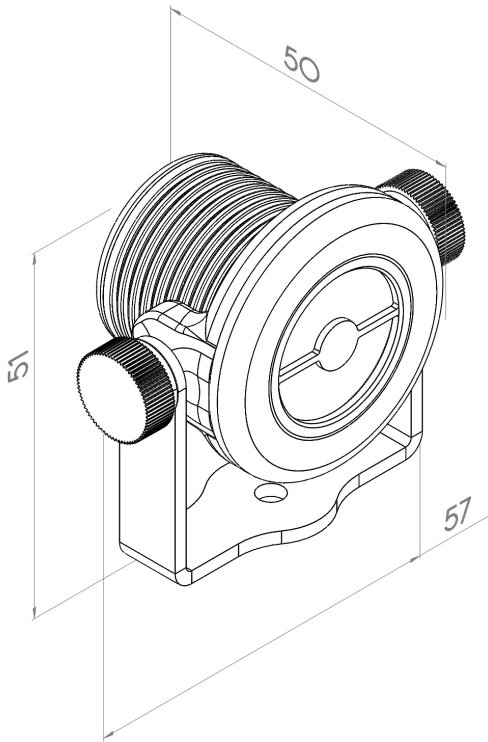
Electrical	Supply voltage	3VDC
	Current	700mA
	Max. power consumption	2,1W

Norms		CE standards - RoHS REACH (in progress)
		EN62368-1:2020 +A11 ; EN60598-2-1:2021 EN60598-2-17 :2018 (in progress)
		EN55032:2015+A1+A11 EN55035:2017+A11 EN55015:2019+A11 ; EN61547:2009 (in progress)

VISUAL

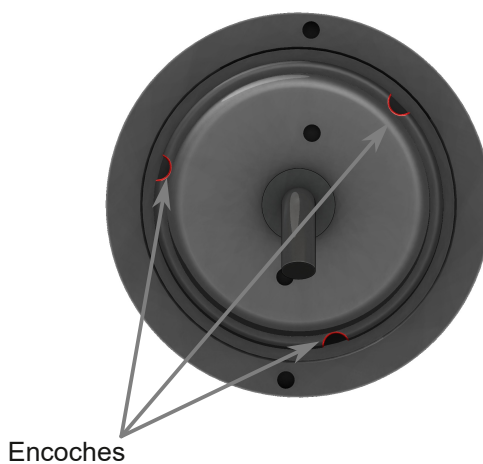
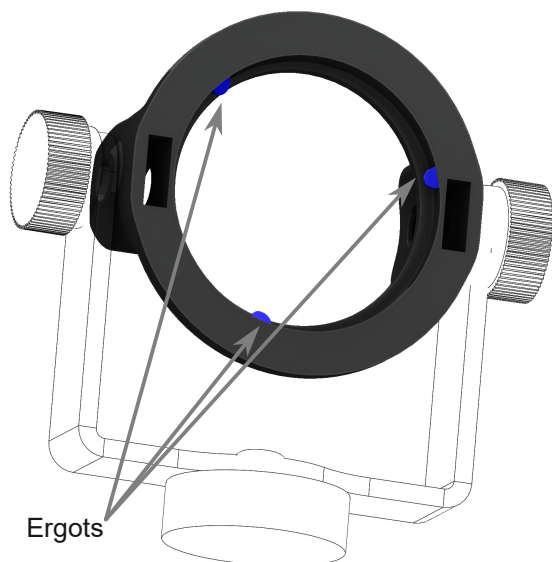


MECHANICAL DRAWINGS

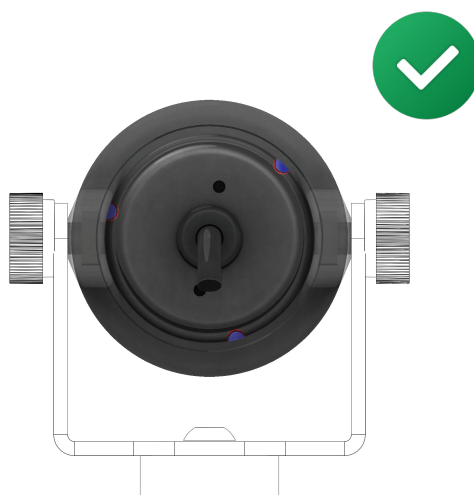
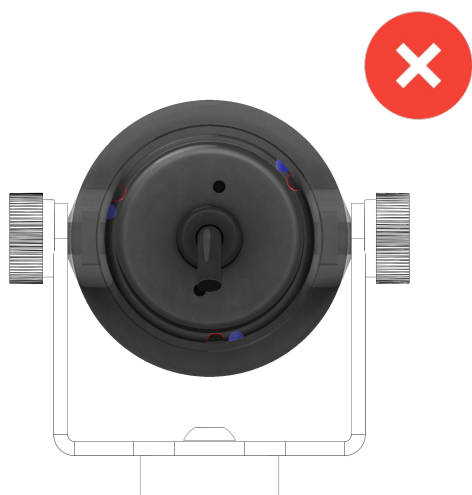


YOKE - PROJECTOR ASSEMBLY

LUGS - NOTCHES

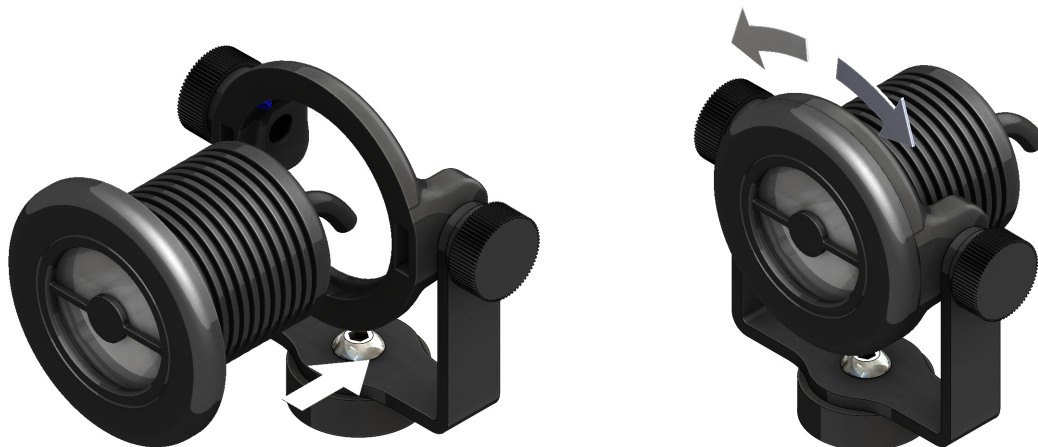


The PixElidy base has 3 lugs which must be aligned with the notches on the PixElidy body to ensure correct assembly.



ASSEMBLY

- Insert the PixElidy into the baseplate, aligning the lugs and notches until the ring makes contact with the baseplate
- Turn the PixElidy in its baseplate to lock the 2 parts.



DISMANTLING



- Turn the PixElidy in its base until you feel the lugs align with the notches



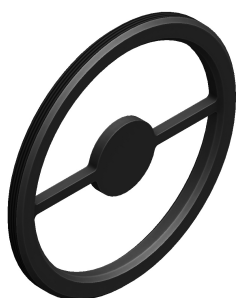
- Push the PixElidy into its axis to remove it from its base and avoid breaking the lugs.



ACCESSORIES



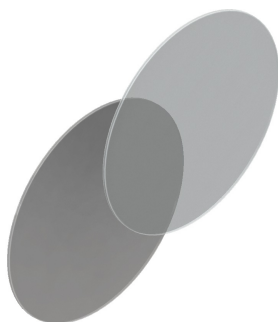
Front ring



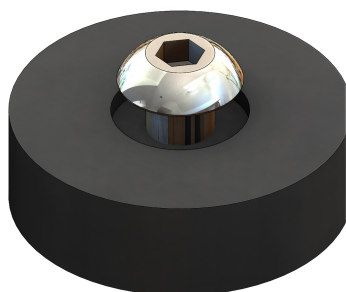
Front ring with iris



Halo cover



Holographic filters



magnetic base

WARRANTY

Scope of warranty

The Products are guaranteed against any material or manufacturing defect for a period of 1 (one) year from the date of delivery, and subject to written notification by EREIMUL within 15 (fifteen) days of the occurrence of the defect.

In the event of repair of the Product, troubleshooting will be carried out by EREIMUL or one of its subcontractors; EREIMUL being the sole decision-maker as to the choice of the intervening party.

The repair and/or replacement of parts or the Product by EREIMUL during the warranty period does not extend the original warranty period. EREIMUL will be the sole decision-maker as to the implementation of its intervention under the present warranty, deciding in particular: Either to repair the Product on the customer's site.

The customer may return the products to EREIMUL for repair. Under the terms of the warranty, the risks and any shipping costs are borne by the Customer, who may not claim any compensation in the event of the product being immobilized as a result of the application of the warranty.

Precautions for use

The present warranty does not apply to apparent defects.

Furthermore, the warranty is excluded in the following cases:

- failure to comply with product use and maintenance instructions.
- abnormal use of the product
- operating errors.
- lack of care or maintenance.
- the intervention of a third party not authorized by EREIMUL to repair the product.

The following are also excluded from this warranty:

- components whose useful life under normal use is less than the warranty period ;
- replacement of consumables.
- defects and their consequences due to any external cause.

Limitation of liability

In the event of the above-mentioned warranty being invoked, EREIMUL's obligation to repair shall be limited, at its option, to the free replacement or repair of the product or parts recognized as defective; to the exclusion of any other obligation to repair of any nature whatsoever.

EREIMUL shall in no event be liable for, and no right to compensation shall be available in respect of, any indirect damage caused to the Customer or to third parties, such as, in particular, operating losses and other commercial damage (including loss of orders, sales or profits, loss of data or the impossibility of achieving expected savings or gains) or moral damage (including damage to reputation or image).

ORDER CODES

PIXELIDY-S	
Reference	Designation
PX131	Pixelidy-S + full accessory kit*

PIXELIDY-S Accessories	
Reference	Designation
XXX	complete accessory kit*
* Halo cover, filter ring, holographic filters (10°, 20°, 30° and 15x45°), magnetic baseplate	

PIXELIDY P-CABLE	
Reference	Designation
PX321/0.5	PIXELIDY Cable 0,5m
PX321/1	PIXELIDY Cable 1m
PX321/2.5	PIXELIDY Cable 2,5m
PX321/5	PIXELIDY Cable 5m

