



Lupo
Made in Italy

**Superpanel
does it better!**



SUPERPANEL DUAL COLOR 30

DIMMER 100 %
HUE 99 SAT 100%

AC supply: 90 V - 240 V
DC supply: 14.8 V - 24 V
Power: 180 W
Input: 50 Hz - 60 Hz
Max ambient temp.: 35°C
IP 20



INTENSITY

MADE IN ITALY



Unleash the beast

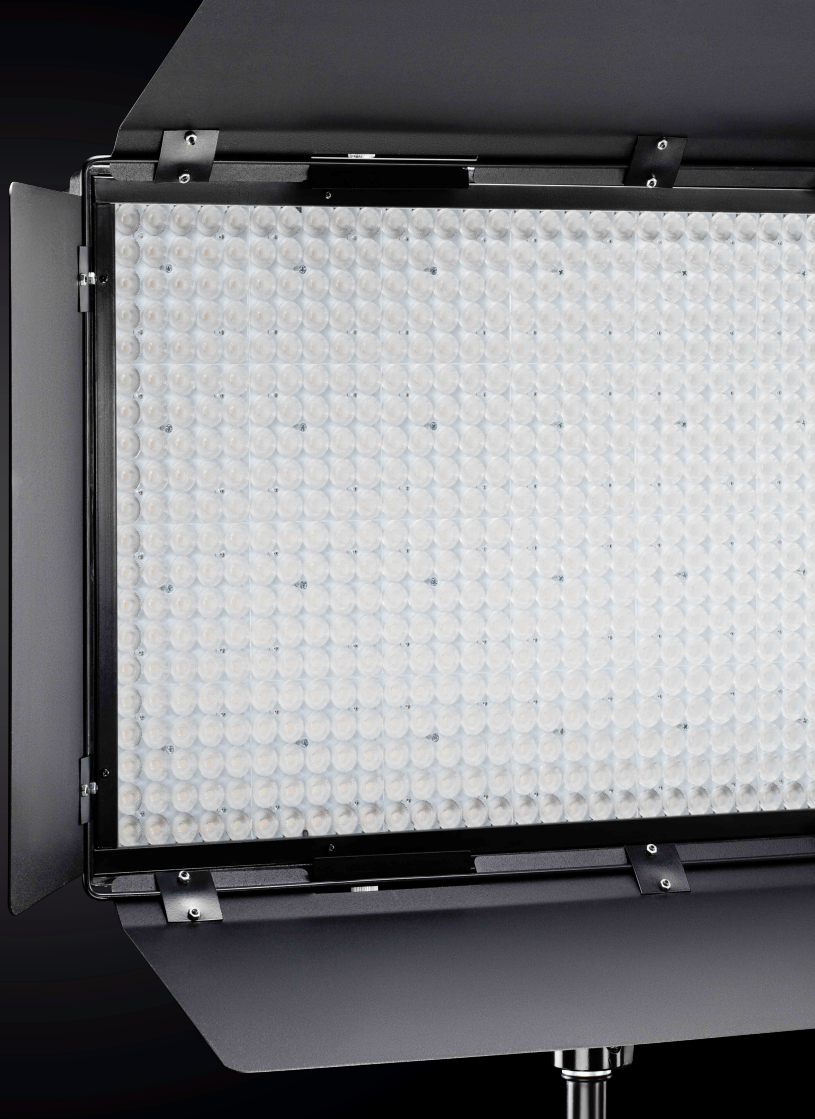
The Superpanels are the latest generation LED panels designed for photography and video shooting. They emit an exceptionally powerful, uniform and enveloping light. Extremely lightweight, compact and handy, the Superpanels are ideal for use inside and outside the studio.

The Superpanels were developed to provide professional performances and are built with high quality components. Lupo products are designed to be reliable over time. The eye-catching design and the functionality of the Superpanel are the highlights of this compact, versatile and incredibly powerful new generation LED panel.

All models in the Superpanel range are designed to make life easier for professionals in the photographic, film and video industry, and silent operation is one of the key features of all of our lighting products.

Exceptional quality of light

Thanks to the exclusive True Colour Technology, the Superpanels have a perfect colour performance and do not produce casts. This fundamental and exclusive feature enables to avoid post-production corrections and allows a correct mix with other light sources.



Lupo

Made in Italy

Technical Features

Superpanel 30 Dual Color cod. 400

Superpanel 60 Dual Color cod. 404

Colour Temperature

5600K - 3200K

5600K - 3200K

Dimensions

33.5 cm x 32 cm x 5 cm

65 cm x 34 cm x 11 cm

Weight

2.3 Kg

9 Kg

CRI

> 95, typical 96

> 95, typical 96

Dimming

included

included

Dimming Curves

Linear / Exponential /
Logarithmic

Linear / Exponential /
Logarithmic

DMX module

included

included

DMX connection

5-Pin XLR in/out

5-Pin XLR in/out

DMX bit

8 bit / 16 bit

8 bit / 16 bit

Battery connection

14,8 V with standard
4-Pin XLR connector

14,8 V with standard
4-Pin XLR connector

Watt consumption

200 W

400 W

Voltage AC

90 V – 240 V

90 V – 240 V

Frecuency

50/60 Hz

50/60 Hz

Compliance

CE

CE

Lupo s.r.l - Via Vittorio Sassi 28/30- 10093 - Collegno (TO) - Italy
www.lupo.it - contact@lupo.it - Tel. 011/4119919