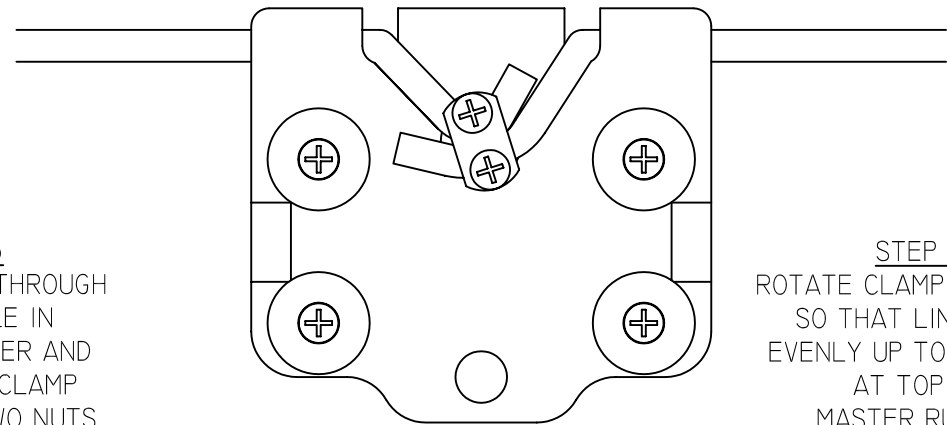
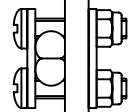
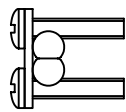
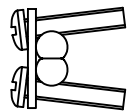


THESE VIEWS SHOW MASTER RUNNER CLAMPED ONTO CONTINUOUS LINE



STEP 1
ASSEMBLE TWO CLAMP
SCREWS THROUGH ONE
CLAMP PLATE AND
WEDGE THE TWO
ENDS OF THE LINE
BETWEEN SCREWS

STEP 2
USE GENTLE FINGER
PRESSURE TO
SQUEEZE THE TWO
CLAMP SCREWS UNTIL
PARALLEL

STEP 3
PUSH SCREWS THROUGH
LARGE HOLE IN
MASTER RUNNER AND
FIT SECOND CLAMP
PLATE AND TWO NUTS

STEP 4
ROTATE CLAMP ASSEMBLY
SO THAT LINE RUNS
EVENLY UP TO NOTCHES
AT TOP OF
MASTER RUNNER
AND TIGHTEN SCREWS GENTLY
TO SECURE ENDS OF LINE

THESE VIEWS SHOW STEP BY STEP PROCEDURE TO ATTACH ENDS OF LINE TO MASTER RUNNER