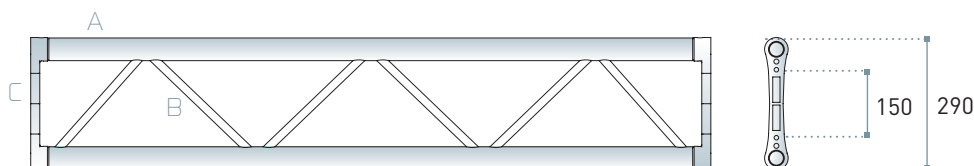




FX30SA ANTI-TORSION

Flat section aluminium truss with 29 cm long sides. The most widely used of the flat, end-plated trusses. Ideal for use in reticular/grid structures and also perfectly suited for use alongside similar components supporting lightweight installations.



Chords A: extruded tube Ø 50x2 mm
EN AW 6082 T6

Diagonals B: extruded tube Ø 18x2 mm
EN AW 6082 T6

Ends C: aluminium casting plate
EN AC 42200 T6

Connection systems

FXFC: quick-fit kit

FXSM10: bolt connection kit

LINEAR ELEMENTS

code	cm	kg
FX30S010M5	29x5x10.5	1.3
FX30S021	29x5x21	1.5
FX30S025	29x5x25	1.6
FX30S050	29x5x50	1.8
FX30S100	29x5x100	2.7
FX30S150	29x5x150	3.7
FX30S200	29x5x200	4.7
FX30S250	29x5x250	5.8
FX30S300	29x5x300	6.7
FX30S350	29x5x350	7.7
FX30S400	29x5x400	8.7

CORNERS AND FITTINGS

code	cm	kg
FX30K2	29x5x5	1.3
FX30K4	29x29x5	3.3
FX30SL2060P	50x50x5	3.8
FX30SL2060V	50x50x29	3.0
FX30SL2090P	50x50x5	2.5
FX30SL2090V	50x50x29	2.8
FX30SL2120P	50x50x5	2.6
FX30SL2120V	50x50x29	2.9
FX30SL2135P	50x50x5	2.7
FX30SL2135V	50x50x29	2.9
FX30SL3LP	50x50x50	3.8
FX30SL3LV	50x50x50	3.8
FX30SL3RP	50x50x50	3.8
FX30SL3RV	50x50x50	3.7
FX30ST3NP	50x50x5	2.9
FX30ST3NV	50x50x29	4.2
FX30ST4NP	50x50x50	3.0
FX30ST4NV	50x50x50	4.2
FX30SX4NP	50x50x5	3.4
FX30SX4NV	50x50x29	3.9
FX30SACL	29x21x5	2.4
FX30SACS	29x10.5x5	2.1





FX305A

LOAD TABLE / SPIGOT CONNECTION

SPAN m	UNIF. DISTRIBUTED LOAD			CENTRE POINT LOAD			THIRD POINT LOAD			QUARTER POINT LOAD			FIFTH POINT LOAD		
	point load kg/m	full load kg	central deflection mm	point load kg	full load kg	central deflection mm	point load kg	full load kg	central deflection mm	point load kg	full load kg	central deflection mm	point load kg	full load kg	central deflection mm
1	1169	1169	0	1124	1124	0	585	1169	0	390	1169	0	292	1169	0
2	366	732	1	423	423	1	274	549	1	195	586	1	152	610	1
3	70	211	1	123	123	1	79	158	1	56	169	1	44	176	1
4	21	83	1	48	48	1	31	62	1	22	67	1	17	69	1
5	7	35	1	21	21	1	13	26	1	10	29	1	7	29	1
6	2	13	1	9	9	1	5	10	1	4	11	1	3	11	1

CANTILEVER LOAD TABLE / SPIGOT CONNECTION

SPAN m	UNIFORMLY DISTRIBUTED LOAD			CENTRE POINT LOAD	
	q am.- kg/m	q am.- kg	defl.- mm	F am.- kg	defl.- mm
1	560	560	1	380	1
2	157	315	5	157	5
3	29	87	5	44	8
4	8	30	5	15	9
5	2	8	5	4	7

AXIAL LOAD TABLE

H m	AXIAL LOAD
	N am. Kg
2	251
3	111
4	63

Load table has been prepared in accordance with UNI EN 1999-1-1 (Eurocode 9). When calculating the allowable loads it is assumed that the load is suspended from the bottom chord and the truss is supported from the top chord at each end.

The values shown in the table are the allowable static loads that can be applied to the truss. This is the live load or the payload. The self weight of the truss has been taken into account when calculating the values in the table.

It should be noted that this is idealised loading conditions and the User shall re-analyze the truss for the loading conditions which prevail for the application being considered.

FX30SA SYSTEM

To further enhance the standard products, LITEC offers a wide range of corners, connections and accessories useful for many different applications and needs. "Quick connect" or "nult & bolt connect". End-plated trusses allow to use two different systems of connection. The quick-fit system is certainly the most wide-spread and mainly used when the structure is frequently assembled and dismantled. In case of permanent installations, on the other hand, a more economical bolt connection system may be used. Our plate is made in such a way that bolts may be completely inserted so that there are no edges or external protuberances which could damage canvases or other fabrics or which might simply be unaesthetic on certain structures.

FX30SA / CONNECTIONS



KSG
Litetruss aluminium
spigot, set of 10



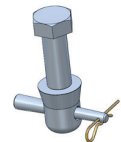
KCP R-spring,
set of 100
KSP Steel pin,
set of 10



K370
Half truss spigot + 1
steel pin + 1 R-spring
(not for Dado)



KSF
Threaded pin, set of 12



KCFS
Kit for vert. connec incl.
bolts, spigots
and accessories



QXFC
Quick connection set

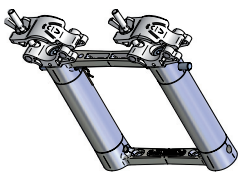


FXKFC
2 special steel half
spigot with screw

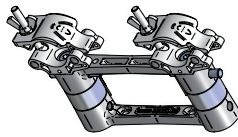


FXSM8
Bolt connection set

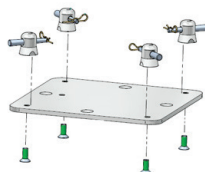
FX30SA / ACCESSORIES



FX30SACL
ST 29 cm. flat - Clamp
module long



FX30SACS
ST 29 cm. flat - Clamp
module short



FP30
Universal 29 cm truss
floor plate



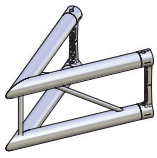
FP30M
Universal 29 cm truss
large floor plate



TZ30K01
Assembly tool for
half-spigot in 25&29 cm
side truss



FX30SA / CORNERS & FITTINGS



FX30SL2060P

ST 29 cm. flat - 2 way
60° corner horizontal



FX30SL2060V

ST 29 cm. flat - 2 way
60° corner vertical



FX30SL2090P

ST 29 cm. flat - 2 way
90° corner horizontal



FX30SL2090V

ST 29 cm. flat - 2 way
90° corner vertical



FX30SL2120P

ST 29 cm. flat - 2 way
120° corner horizontal



FX30SL2120V

ST 29 cm. flat - 2 way
120° corner vertical



FX30SL2135P

ST 29 cm. flat - 2 way
135° corner horizontal



FX30SL2135V

ST 29 cm. flat - 2 way
135° corner vertical



FX30SL3LP

ST 29 cm. flat - 3 way
corner left horizontal



FX30SL3LV

ST 29 cm. flat - 3 way
corner left vertical



FX30SL3RP

ST 29 cm. flat - 3 way
corner right horizontal



FX30SL3RV

ST 29 cm. flat - 3 way
corner right vertical



FX30ST3NP

ST 29 cm. flat - 3 way
tee horizontal



FX30ST3NV

ST 29 cm. flat - 3 way
tee vertical



FX30ST4NP

ST 29 cm. flat - 4 way
tee horizontal



FX30ST4NV

ST 29 cm. flat - 4 way
tee vertical



FX30SX4NP

ST 29 cm. flat - 4 way
cross horizontal



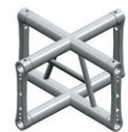
FX30SX4NV

ST 29 cm. flat - 4 way
cross vertical



FX25SX4NP

ST 25 cm. flat - 4 way
cross horizontal



FX25SX4NV

ST 25 cm. flat - 4 way
cross vertical

DADO SYSTEM DADO, the solution for all 90° corners and crosses. Managing corners and crosses is one of the biggest problems structure installers and hirers have to face. DADO is the answer. It is devised around a six-faced die-cast cube and may be put together in multifarious ways leaving the user complete freedom. The connection between DADO and the trusses is the quick-fit type, with special steel half spigots. Their assembly and alignment is made easy with an assembly template.



FX30K2

DADO 4 way flat
corner (2 nodules)

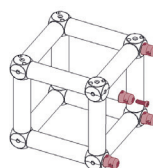
**K2 is the DADO version
for flat section.**



FX30K4

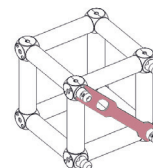
DADO 6 way flat
corner (4 nodules)

**K4 is the DADO version
for square and flat
section structures.**



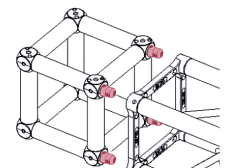
COUPLER ASSEMBLY

Before joining a truss to a Dado, the half-spigots must be inserted on the face to be connected. The spigots should be connected to a Dado with M10 screws. Do not tighten the screws yet.



BLOCKING THE SPIGOTS

Next, using the supplied tool, tighten the screws two by two on the diagonals of the same face. Use of tool TZ30K01 (or TZ40K01 or QX40K8) is essential for maintaining the position of the spigots.



CONNECTING TO THE TRUSS

Connecting Dado to a truss is straightforward and intuitive. You will need both the conical pins and safety split-pins. **NOTE:** the conical pins must be hammered hard into the connectors.